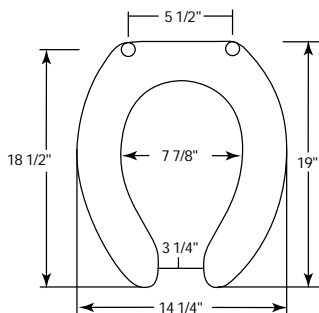
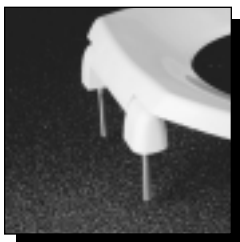
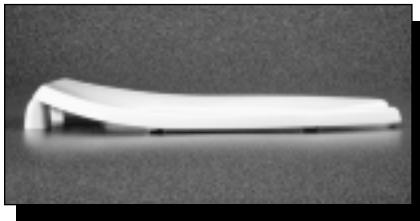


# COMMERCIAL PLASTIC SEATS



Seats shall be No. \_\_\_\_\_ as manufactured by Church Seats. Seats shall be heavy weight and injection molded of solid plastic. Seats shall be open front less cover for elongated bowl and feature large molded-in bumpers. External check hinges to feature 300 Series stainless steel posts that stop seat 11 degrees beyond vertical. Uses 300 Series stainless steel hardware. Color to be \_\_\_\_\_. (specify white or fixture manufacturer's color.) Hinges shall be \_\_\_\_\_.



## MODEL 295C

- ELONGATED SEAT  
OPEN FRONT LESS COVER
- SOLID PLASTIC
- EXTERNAL 300 SERIES  
STAINLESS STEEL CHECK HINGES



- 295C Open front seat less cover/external check hinge stops seat 11° beyond vertical.
  - 295SSC Open front seat less cover/stainless steel, self-sustaining and external check hinge holds seat in any raised position up to 11° beyond vertical.
- Ring thickness is 13/16"  
 Ring thickness including the bumper is 1"  
 Height of the seat is 2-1/4"

