



Eemax "DRENCH SHOWER" Models

Recommended for emergency drench showers to comply with ANSI Z358.1 tepid water requirements (60°-95°) 20 GPM. 480Y/277V three phase (wye/star) or 208/120 volt three phase (delta no neutral leg) electrical configuration. **Contact Factory for sizing.**

MODEL NO.	VOLTS	kW	AMPS	TEMP. RISE °F AT 20 GPM	SPEC OPTION:
EX360T12	208V	36kW	100A	12.3	<input type="checkbox"/> DS = Emergency Drench Shower Tepid Water ANSI Z358.1 <input type="checkbox"/> EFD/combo = for combo eye/face drench shower, flow range 4 GPM, 15-25 GPM
EX480T12	480Y/277V or 208V	48kW	58 or 133A/phase	16.4	
EX720T12	480Y/277V or 208V	72kW	87 or 200A/phase	24.6	
EX960T12	480Y/277V or 208V	96kW	116 or 267A/phase	32.8	
EX1080T12	480Y/277V	108kW	130A/phase	36.9	
EX1260T12	480Y/277V	126kW	156A/phase	43.0	

MINI-TANK ELECTRIC WATER HEATERS • EASY INSTALLATION

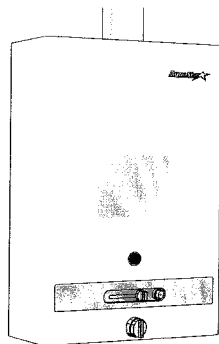
Lightweight and compact, the 2.5 and 4 gallon models plug into a standard 110 volt outlet. The 6 Gallon Plus requires hard wiring and can be mounted vertically or horizontally. All models include a mounting bracket.

SPECIFICATIONS	EGL2.5	EGL4	EGL6 PLUS	All Units
Tank Volume	2.5 gallons	4 gallons	6+ gallons	• Voltage - 110/120 volts • Amperage - 12.5 amps • Heating Capacity - 1500 watts • Phase - single • Temperatures - 65-145°F • Operating Pressure - 150 psi
Dimensions	14" x 14" x 10 1/4"	14" x 14" x 12 1/4"	17 1/2" x 17 1/2" x 14 1/2"	
Recovery at 1 90°F Rise	8 GPH*	10.5 GPH*	12.5 GPH*	
Water Connections	1/2 inch NPT	1/2 inch NPT	3/4 inch NPT	
Relief Valve	installed	installed	included	
Multi-directional Mounting	no	no	yes	



EGL2.5

Gas Tankless Water Heaters

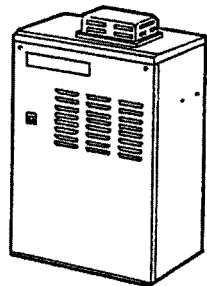


Model E125B
Dimensions 29 3/4" x 13 1/4" x 8 3/4"

	MODEL	WEIGHT	FUEL	BTU/INPUT
CONVENTIONAL FLUE	E125B LP residential	44 lbs	propane	117,000
	E125B NG		natural gas	117,000
	E125X LP residential (no pilot)	44 lbs	propane	117,000
	E125X NG		natural gas	117,000
POWER VENTED	E125FX LP residential (no pilot)	44 lbs	propane	125,000
	E125FX NG		natural gas	125,000

Note: B = Standing pilot for Model E125B
 X = No standing pilot, sparked ignition, battery operated (2 D cell batteries)
 FX = Power vent, h 110 volt plug in electric ignition/freeze protection EFX Hood
 All models include a pressure relief valve.

Powerful 185,000 & 240,000 BTU Water Heaters for Whole House



Model E185T-K2
Dimensions 24 1/2" x 16 1/2" x 8 1/2"
(outdoor installation)

	MODEL	WEIGHT	FUEL	BTU/INPUT
POWER VENTED	E185T-K2 LP residential	60 lbs	propane	175,000
	E185T-K2 NG		natural gas	185,000
	E240T-MI LP residential	70 lbs	propane	225,000
	E240T-MI NG		natural gas	235,000

OPTIONAL PARTS - E185T-K2		OPTIONAL PARTS - E240T-MI	
TK - RE01	(Temperature Remote Controller)	TK - RE01	(Temperature Remote Controller)
TK - BK01	(Wall Mount Bracket)	TK - BK01	(Wall Mount Bracket)
TK - TV01	(Side Wall Vent Terminator)	TK - TV01	(Side Wall Vent Terminator)
TK-TV04	(outdoor Installation Vent Cap)	TK - RE20	(multi unit controller)

FEATURES INCLUDE:

- electronic ignition
- indoor/outdoor installation (warmer climates)
- built in power vent
- modulating gas & water valve
- computer controls



ELECTRIC TANKLESS WATER HEATERS QUICK REFERENCE

9/02

Eemax "SINGLE POINT" Models

Designed for undersink handwashing installation, single faucet use with 3/8" compression fittings at top of unit. Top or rear entry electric. Integral 1/2 GPM flow control and faucet aerator provided.



SP

MODEL NO.	VOLTS	kW	AMPS	TEMP. RISE °F AT 0.5 GPM	EXCLUSIVE "SP" FEATURES
SP2412	120V	2.4kW	20A	33°	• Integral flow restrictor 1/2 GPM meets public handwashing requirements • Convenient 3/8" compression fittings • Faucet aerator included • Field serviceable element
SP3012	120V	3.0kW	25A	41°	
SP3512	120V	3.5kW	29A	48°	
SP3208	208V	3.0kW	14.4A	41°	
SP4208	208V	4.1kW	19.7A	56°	
SP35	240V	3.5kW	14.6A	48°	
SP55	240V	5.5kW	22.9A	75°	OPTIONS <input type="checkbox"/> FC = Flex Connector 3/8" c x 1/2 16" faucet supply EX176 3/8" c x 3/8" OD 16" faucet supply EX177
SP3277	277V	3.0kW	10.8A	41°	
SP4277	277V	4.1kW	14.8A	56°	

Eemax "FLOW CONTROLLED" Models

Recommended cold water feed, fitted with either 3/8" or 1/2" pipe compression fittings on bottom of unit. Available flow control and aerator. Bottom or rear entry electric. **Ideal for Kitchen sinks, bar sinks, dual lavs, etc.** Add "SL" for 3/8" compression fittings.



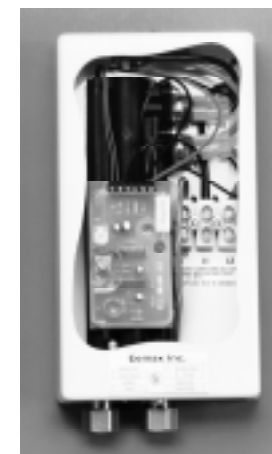
EX

MODEL NO.	VOLTS	kW	AMPS	TEMP. RISE °F AT 1 GPM/1.5 GPM @ 0.5 GPM	OPTIONS
EX35SL	240V*	3.5kW	14.5A	48° @ 0.5 GPM	Kitchen Sink <input type="checkbox"/> SL = Single Lav 3/8" compression fittings <input type="checkbox"/> DL = Dual Faucet two faucet aerators provided 1/2" comp fittings <input type="checkbox"/> FC = Flex Connector braided stainless steel water connection 3/8" c x 1/2 16" faucet supply EX176 3/8" c x 3/8" OD 16" faucet supply EX177
EX55	240V*	5.5kW	23A	38°/25°	
EX65	240V*	6.5kW	27A	44°/30°	
EX75	240V*	7.5kW	32A	51°/34°	
EX95	240V*	9.5kW	40A	65°/43°	
EX8208	208V	8.3kW	40A	57°/38°	
EX60	277V	6.0kW	22A	41°/27°	
EX80	277V	8.0kW	29A	55°/36°	
EX90	277V	9.0kW	33A	61°/41°	
EX100	277V	10.0kW	36A	68°/46°	

*Units can be used on 208V with 25% reduced output

Eemax "THERMOSTATIC" Models

Recommended for hot or cold feed, use for booster to 180° or wherever accurate temperature is required. Fitted with 1/2" pipe compression fittings with rear or bottom electric entry. **Ideal for schools, hospitals, emergency eye wash, multi outlet handwashing, etc.** Thermostat ± 1° accuracy. Standard range 100°-140°F. (Optional factory set temperature available).



EX (T)

MODEL NO.	VOLTS	kW	AMPS	TEMP. RISE °F AT 1 GPM/1.5 GPM	Multi Lav
EX2412T	120V	2.4kW	20A	33° @ .5 GPM	Ideal for one, two or three lavs at (.5GPM) will maintain constant temp (EX65 and up)
EX3012T	120V	3.0kW	25A	41° @ .5 GPM	
EX3512T	120V	3.5kW	29A	48° @ .5GPM	
EX55T	240V*	5.5kW	23A	38°/25°	
EX65T	240V*	6.5kW	27A	44°/30°	
EX75T	240V*	7.5kW	32A	51°/34°	
EX95T	240V*	9.5kW	40A	65°/43°	
EX8208T	208V	8.3kW	40A	57°/38°	
EX60T	277V	6.0kW	22A	41°/27°	
EX80T	277V	8.0kW	29A	55°/36°	
EX90T	277V	9.0kW	33A	61°/41°	
EX100T	277V	10.0kW	36A	68°/46°	

*Units can be used on 208V with 25% reduced output

SPEC OPTIONS
 EE = (Emergency Eye Wash) specify for Tepid Water requirements (i.e.) EX95TEE
 ML = (Multi Lav) .5 GPM turn on for one, two, or three, lavs @.5 GPM 105° temp setting (i.e.) EX95TML
 S = Sanitation setting 180°

Eemax Inc.

353 CHRISTIAN ST., OXFORD, CT 06478
 email - eemaxinc@aol.com

www.eemax.com

Toll Free: 1-(800) 543-6163
 Telephone: (203) 267-7890
 FAX: (203) 267-7975

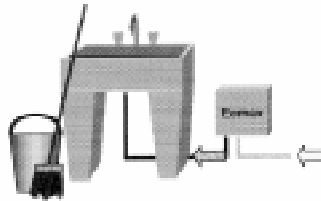
Eemax Twin Module "SERIES TWO" Models

"Parallel" Flow Control Models (Twin Module) Cold Water Feed

Recommended for higher flow rate hot water applications. Feed with cold water only. Fitted with 1/2" pipe compression fittings and bottom entry electric. (i.e. Industrial processes, mop sinks). Minimum flow 1.5 GPM. Max 4 GPM

MODEL NO.	VOLTS	kW	AMPS	TEMP. RISE °F AT 2 GPM/3 GPM
EX144P2	240V*	15.0kW	64(2x32)A	51°/34°
EX190P2	240V*	19.0kW	80(2x40)A	65°/43°
EX1608P2	208V	16.6kW	77(2x38.5)A	57°/38°
EX160P2	277V	16.0kW	58(2x29)A	55°/36°
EX200P2	277V	20.0kW	72(2x36)A	68°/46°

Higher flow rates, mop sink etc.



P2

"Parallel" Models (Twin Module) With Two Thermostats Hot or Cold Water Feed

Hot or cold water feed, booster to 180° (dishwashers, photo processing, etc). Min. flow, 1.5 GPM. Max 4 GPM. Normal range: 100 - 140°

MODEL NO.	VOLTS	kW	AMPS	TEMP. RISE °F AT 2 GPM/3 GPM
EX144T2	240V*	15.0kW	64(2x32)A	51°/34°
EX190T2	240V*	19.0kW	80(2x40)A	65°/43°
EX1608T2	208V	16.6kW	77(2x38.5)A	57°/38°
EX160T2	277V	16.0kW	58(2x29)A	55°/36°
EX200T2	277V	20.0kW	72(2x36)A	68°/46°



Sanitizing Booster For Commercial Dishwashing etc.
 OPTIONS
 S = Sanitation 180°
 EE = Tepid Water ANSI Z358.1



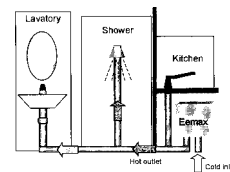
T2

"SERIES TWO" Models (Twin Module) with Single Thermostatic Control

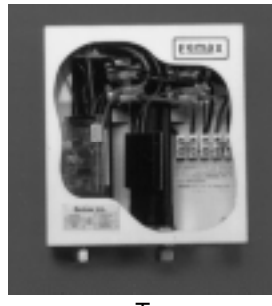
Activated in stages, based on demand. Residential (showers, etc). Min. Flow, 0.8 GPM. Max 4 GPM

MODEL NO.	VOLTS	kW	AMPS	TEMP. RISE °F AT 2 GPM/3 GPM
EX144(T,TC)	240V*	15.0kW	64(2x32)A	51°/34°
EX190(T,TC)	240V*	19.0kW	80(2x40)A	65°/43°
EX1608(T,TC)	208V	16.6kW	77(2x38.5)A	57°/38°
EX160(T,TC)	277V	16.0kW	58(2x29)A	55°/36°
EX200(T,TC)	277V	20.0kW	72(2x36)A	68°/46°

single shower (cabin or condo)



OPTIONS
 T = Cold Water Feed
 TC = Hot or Cold Water Feed
 ML = Multi Lavs up to 4 @ .5 GPM



T

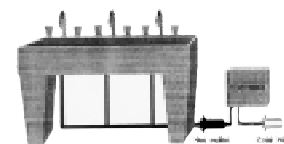
Eemax "THREE PHASE" Models

"THREE PHASE" Models (Triple Module) Parallel Cold Water Feed

Designed for cold water feed use in Commercial and Industrial applications. Available in 480Y/277 volts(4 wire - wye/star) or 208/120V (no neutral leg - Delta) electrics. Fitted with 1/2" pipe compression fittings and bottom entry electric. Turn on 1.8 GPM. Max 5 GPM (Three compartment sinks).

MODEL NO.	VOLTS	kW	208V or 277V AMPS	TEMP. RISE °F AT 3 GPM/4 GPM
EX180P3	208 or 480Y/277V	18.0kW	50 or 22A/phase	41°/31°
EX240P3	208 or 480Y/277V	24.0kW	67 or 29A/phase	55°/41°
EX320P3	480Y/277V	32.0kW	39A/phase	73°/54°

Compartment or food prep sinks



Eemax 208/120 Three Phase Units
 Delta Configuration
 requires: 3 lives, 1 ground (earth) (no neutral)

Eemax 480/277 Three Phase Units
 Star Configuration
 requires: 3 lives, 1 neutral & ground



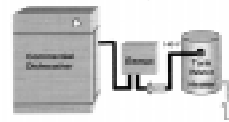
EX(T3)

"THREE PHASE" Models (Triple Module) Thermostatic Hot or Cold Water Feed

Same as above. Cold or hot feed for booster or where very accurate water temperature is required. Can deliver up to 180°F outlet temperature (sanitizing). Turn on 1.8 GPM. Max 5 GPM

MODEL NO.	VOLTS	kW	208V or 277V AMPS	TEMP. RISE °F AT 3 GPM/4 GPM
EX180T3	208 or 480Y/277V	18.0kW	50 or 22A/phase	41°/31°
EX240T3	208 or 480Y/277V	24.0kW	67 or 29A/phase	55°/41°
EX320T3	480Y/277V	32.0kW	39A/phase	73°/54°

Sanitizing Booster For Commercial Dishwashing etc.



OPTIONS
 S = Sanitation 180°
 EE = Tepid Water ANSI Z358.1

MASTER SPECS
 10 unit Master Carton: 12 1/2" x 11 1/2" x 13, 30 lb.
 21 unit Master Carton: 18 x 18x 13, 63 lb.

"THREE PHASE" MODELS (Triple Module) Thermostatic (Low Turn On)

0.7 GPM turn on. Max 4 GPM. (Ideal for multi shower, modular handwash stations). Turns on in stages based on flow rate.

MODEL NO.	VOLTS	kW	208V/277V AMPS	TEMP. RISE °F AT 3 GPM / 4 GPM
EX180(T2T,T2P)	208V or 277V	18kW	50A or 22A/phase	41°/30°
EX240(T2T,T2P)	208V or 277V	24kW	67A or 29A/phase	55°/41°
EX320(T2T,T2P)	277V	32kW	39A/phase	73°/54°

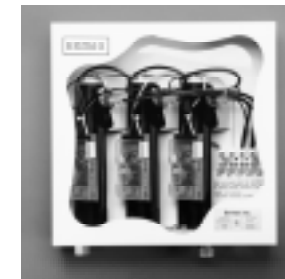
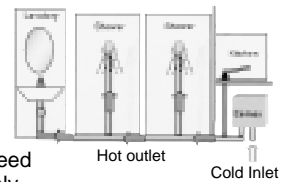
WHOLE HOUSE RESIDENTIAL

*EX280(T2T,T2P)	240V	28kW	120(3x40)A	64°/48°
-----------------	------	------	------------	---------

*Single phase 240V/208V

OPTIONS: T2T = Hot or cold feed
 T2P = Cold feed only

Eemax most powerful whole house, multi shower water heater (range .7 to 4 GPM)



EX(T2T)

"DIGITAL READOUT"

Recommended for cold or hot feed use for booster, or wherever accurate temperature is required. Fitted with 1/2" pipe compression fittings with rear or bottom entry electric. Capable of achieving precise temperature. Ideal for labs, hospitals, photo processing, etc. Thermostat ± 1°F accuracy. External thermostatic control and digital temperature readout

MODEL NO.	VOLTS	kW	AMPS	TEMP RISE °F AT (1 GPM)	2 GPM / 3 GPM
EX55T DR	240V*	5.5kW	23A	38°	19° / 13°
EX65T DR	240V*	6.5kW	27A	44°	22° / 15°
EX75T DR	240V*	7.5kW	32A	51°	26° / 17°
EX95T DR	240V*	9.5kW	40A	65°	32° / 22°
EX8208T DR	208V	8.3kW	40A	57°	28° / 19°

DUAL HEATING MODULE

EX144T DR	240V	15.0kW	64(2x32)A	102°	51° / 34°
EX190T DR	240V	19.0kW	80(2x40)A	130°	65° / 43°

TRIPLE HEATING MODULE

EX280T DR	240V	28.0kW	120(3x40)A	95° / 64°
-----------	------	--------	------------	-----------

*Units can be used on 208V with 25% reduced output

SPEC OPTION: EE= Tepid Water ANSI Z358.1
 S = Sanitation 180°
 P = Photo setting ambient to 100°



DR

"DE-IONIZED" MODELS

PRECISE OUTLET TEMPERATURE SETTINGS
 Micro Processing Temperature Control ± One Degree Accuracy

MODEL NO.	VOLTS	kW	AMPS	TEMP RISE °F AT (1 GPM)
EX55T DI	240V*	5.5kW	23A	38°
EX65T DI	240V*	6.5kW	27A	44°
EX75T DI	240V*	7.5kW	32A	51°
EX95T DI	240V*	9.5kW	40A	65°
EX8208T DI	208V	8.3kW	40A	57°
EX60T DI	277V	6.0kW	22A	41°
EX80T DI	277V	8.0kW	29A	54°
EX90T DI	277V	9.0kW	33A	62°
EX100T DI	277V	10.0kW	36A	68°

*Units can be used on 208V with 25% reduced output.

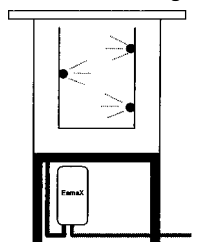


EX "T" Thermostatic



"THREE PHASE" EEMAX DI WATER HEATERS ARE CAPABLE OF HEATING WATER UP TO 18 M.OHM QUALITY.

Spray rinse tanks. Ultrasonic cleaning.



THREE PHASE THERMOSTATIC MODELS

MODEL NO.	VOLTS	kW	208V or 480Y/277V AMPS	TEMP RISE °F AT (3 GPM / 4 GPM)
EX180T DI	208V or 480Y/277V	18kW	50A or 22A/phase	41°/31°
EX240T DI	208V or 480Y/277V	24kW	67A or 29A/phase	55°/41°
EX320T DI	480Y/277V	32kW	39A/phase	73°/54°
* EX280T DI	240V	28kW	120(3x40)A	64°/48°

* Single phase 240V/208V

Ultrapure water "DI" heaters have been tested by independent analytical laboratory with DI water samples collected upstream and downstream of DI heater. Test results demonstrate consistent purity of water. Test data available upon request. Ultrasonic cleaning, pharmaceuticals.

FLOW CHART

POWER REQUIRED - kW

GPM	20°F	30°F	40°F	50°F	60°F	70°F	80°F	90°F	100°F	110°F
10	29.34kW	44kW	58.6kW	73.2kW	87.8kW	102.4kW	117.0kW	131.6kW	146.2kW	160.8kW
9	26.4kW	39.5kW	52.7kW	65.9kW	79.1kW	92.3kW	105.5kW	118.7kW	131.9kW	145.1kW
8	23.4kW	35.1kW	46.9kW	58.6kW	70.3kW	82.0kW	93.7kW	105.4kW	117.1kW	128.8kW
7	20.5kW	30.7kW	41kW	51.2kW	61.5kW	71.8kW	82.1kW	92.4kW	102.7kW	113.0kW
6	17.6kW	26.4kW	35.1kW	44kW	52.7kW	61.5kW	70.3kW	79.1kW	87.9kW	96.7kW
5	14.6kW	22kW	29kW	37kW	44kW	51.2kW	58.6kW	65.9kW	73.2kW	80.5kW
4	11.7kW	17.6kW	23.4kW	29kW	35.1kW	41kW	46.9kW	52.7kW	58.6kW	64.4kW
3	8.8kW	13.0kW	17.6kW	22kW	26.4kW	30.7kW	35.1kW	39.5kW	44kW	48.3kW
2	5.8kW	8.8kW	11.7kW	14.6kW	17.6kW	20.5kW	23.4kW	26.4kW	29.3kW	32.2kW
1	3.0kW	4.4kW	5.8kW	7.3kW	8.8kW	10.2kW	11.7kW	13.0kW	14.6kW	16.1kW
1/2	—	—	3.0kW	3.6kW	4.4kW	5.1kW	5.8kW	6.5kW	7.3kW	8kW

Typical Flow Rates in Gallons per Minute (gpm)

Fixture Type	Lavatory	Bathtub	Shower	Kitchen Sink	Pantry Sink	Laundry Sink	Dish-washer
Flow Rates	.5	2.0 - 4.0	1.5 - 3.0	1.0 - 1.5	1.5 - 2.5	2.5 - 3.0	1.0 - 3.0

FORMULAS

Flow Rate, (GPM) = $\frac{\text{kW rating} \times 6.83}{\text{rise in temp } (^\circ\text{F})}$

Rise in Temp. (°F) = $\frac{\text{kW rating} \times 6.83}{\text{GPM}}$

kW Rating = $\frac{\text{GPM} \times \text{rise in temp}}{6.83}$

Temperature Rise - °F